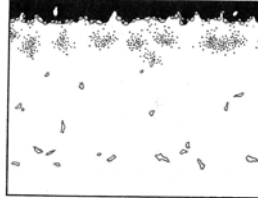


INTERFACE DERMATITIS

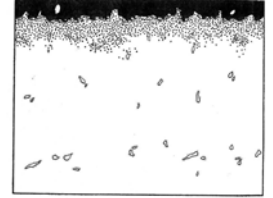
David Frishberg, M.D.,
Los Angeles Society of Pathologists
April 8, 2008

Interface Dermatitis

▶ Vacuolar pattern



▶ Lichenoid pattern



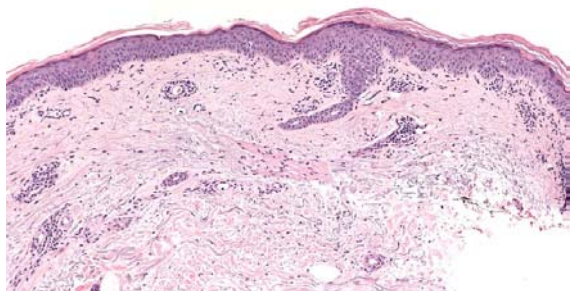
Interface Dermatitis

- ▶ Vacuolar
 - Erythema multiforme and TEN
 - Mucha-Haberman disease (PLEVA)
 - GVHD
 - Chemotherapeutic effect
 - Drug eruption
 - Collagen vascular disease, including DLE and SLE
 - Lichen sclerosis et atrophicus
 - Fixed drug, superficial
- ▶ Lichenoid
 - Lichen planus
 - Fixed Drug
 - Lichenoid drug eruption
 - Mucha Haberman disease
 - Lichen striatus
 - Lichenoid photodermatitis
 - GVHD (sometimes)
 - Lichenoid purpura of Gougerot-Blum
 - Lichen nitidus
 - Sarcoidosis (rarely)
 - Letterer-Siwe disease

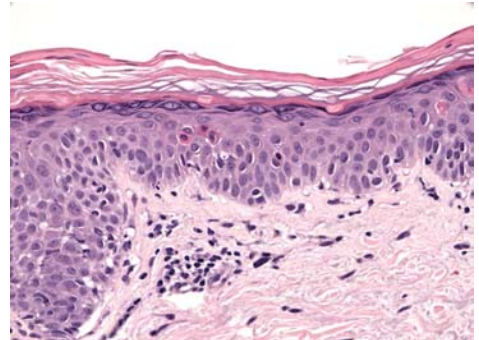
Interface Dermatitis

- ▶ "Non dermatitis" lesions with interface pattern:
 - Lichen planus-like keratosis
 - Regressing/involuting melanocytic proliferation
 - Inflammatory response to leading edge of basal cell carcinoma
 - Plaque stage MF

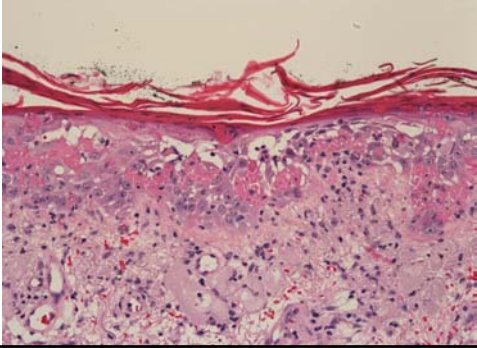
Vacuolar Interface Dermatitis-
Mostly Junctional/Intraepidermal Pattern:
Erythema Multiforme



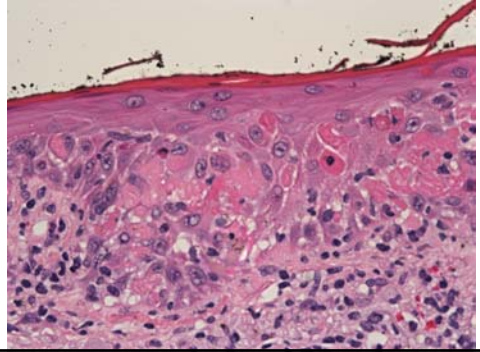
Vacuolar Interface Dermatitis-
Mostly Junctional/Intraepidermal Pattern:
Erythema Multiforme



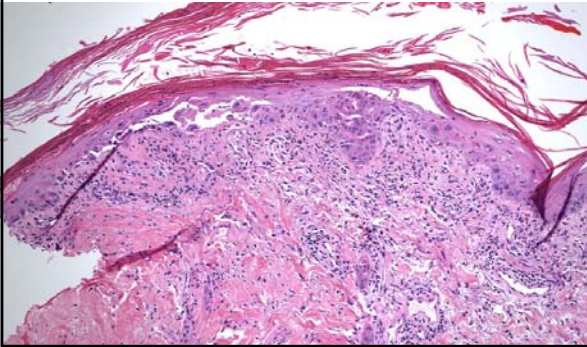
Vacuolar Interface Dermatitis-
Mostly Junctional/Intraepidermal Pattern:
GVHD



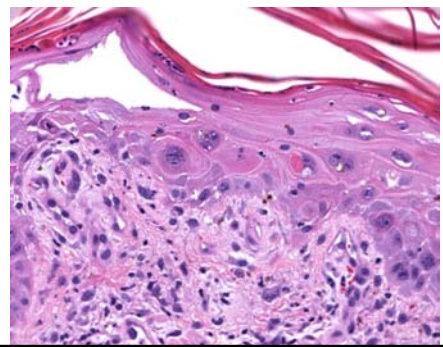
Vacuolar Interface Dermatitis-
Mostly Junctional/Intraepidermal Pattern:
GVHD



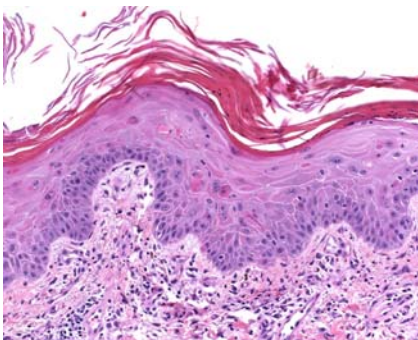
Vacuolar Interface Dermatitis-
Mostly Junctional/Intraepidermal Pattern:
Cytotoxic Chemotherapeutic Effect



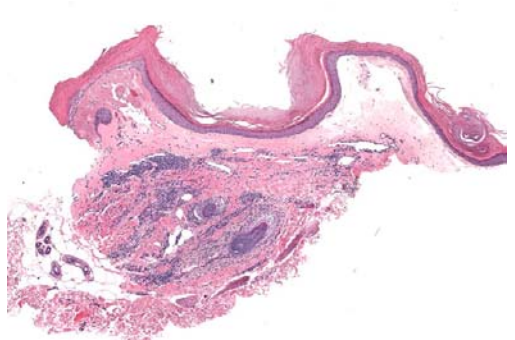
Vacuolar Interface Dermatitis-
Mostly Junctional/Intraepidermal Pattern:
Cytotoxic Chemotherapeutic Effect



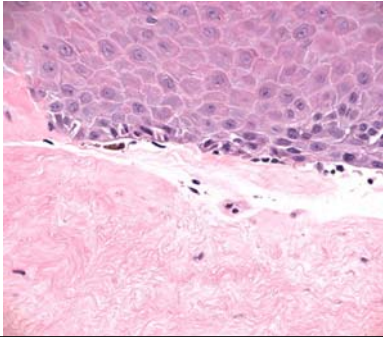
Vacuolar Interface Dermatitis-
Mostly Junctional/Intraepidermal Pattern:
Cytotoxic Chemotherapeutic Effect



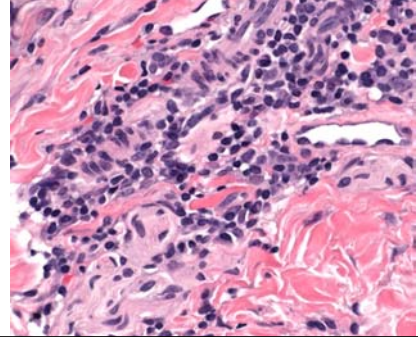
Vacuolar Interface Dermatitis-
Mostly Junctional/Dermal Pattern:
Lichen Sclerosus et Atrophicus



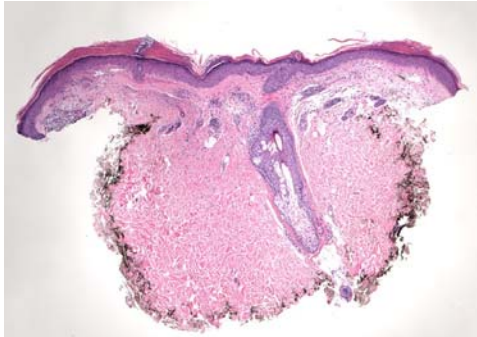
Vacuolar Interface Dermatitis-
Mostly Junctional/Dermal Pattern:
Lichen Sclerosus et Atrophicus



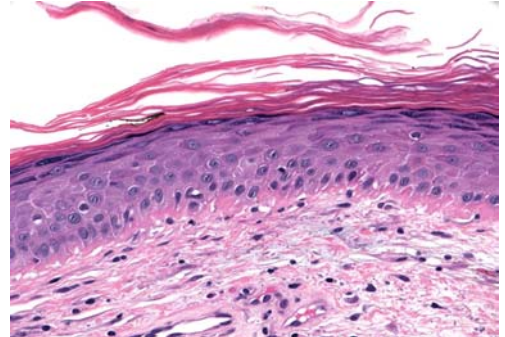
Vacuolar Interface Dermatitis-
Mostly Junctional/Dermal Pattern:
Lichen Sclerosus et Atrophicus



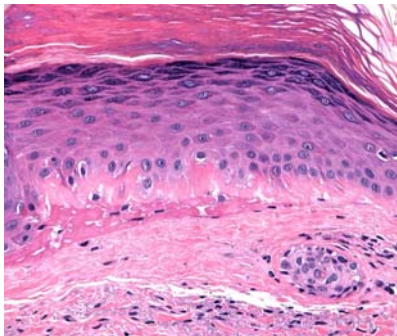
Vacuolar Interface Dermatitis-
Mostly Junctional/Dermal Pattern:
Connective Tissue Disease (Dermatomyositis)



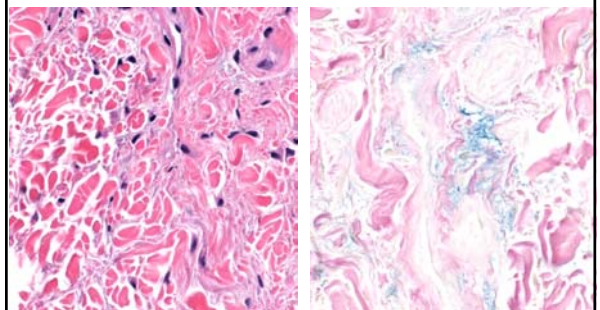
Vacuolar Interface Dermatitis-
Mostly Junctional/Dermal Pattern:
Connective Tissue Disease (Dermatomyositis)



Vacuolar Interface Dermatitis-
Mostly Junctional/Dermal Pattern:
Connective Tissue Disease (Dermatomyositis)



Vacuolar Interface Dermatitis-
Mostly Junctional/Dermal Pattern:
Connective Tissue Disease (Dermatomyositis)

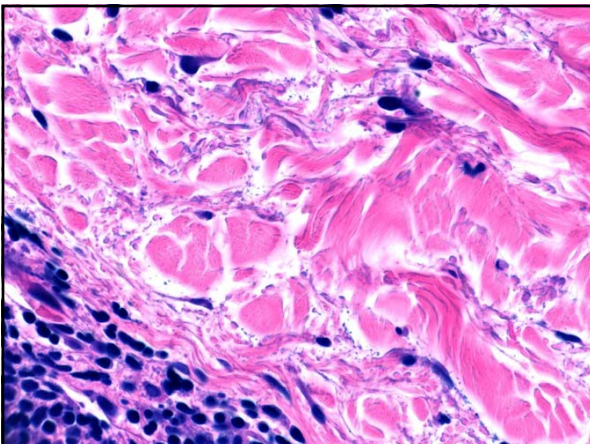
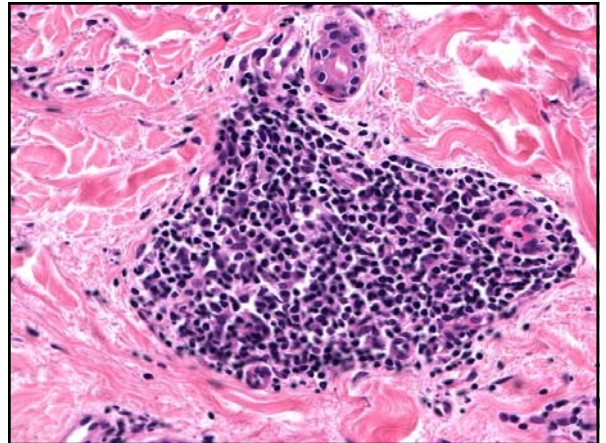
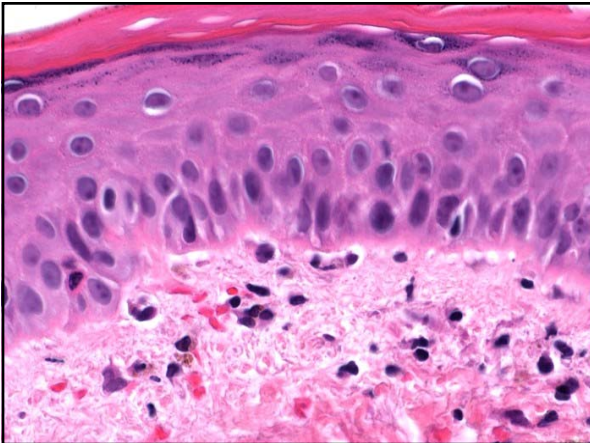
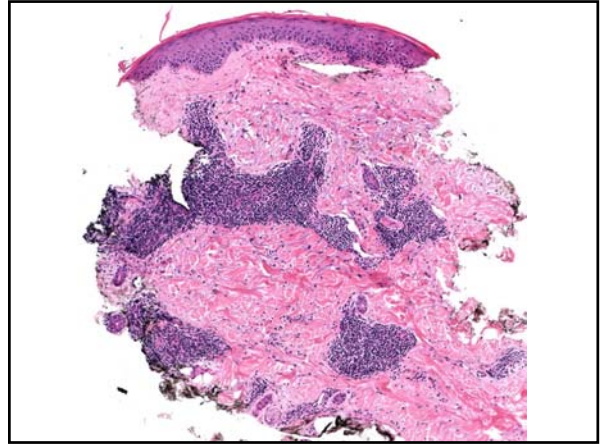


CASE # 1

- ▶ A 44 year old white woman presented to her dermatologist with a circinate, scaly, bright red patch on her temple.

A 2 mm punch biopsy was performed.

What is your diagnosis?



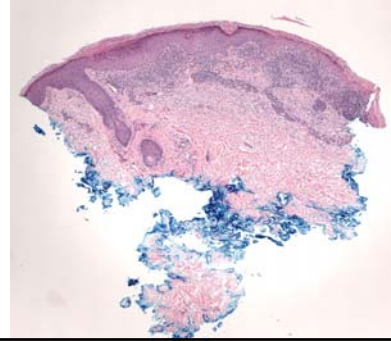
CASE # 1 – SUMMARY OF FINDINGS

- Histologic:
 - ▶ Superficial and deep perivascular lymphocytic inflammation in an apparent patchy distribution
 - ▶ Subtle vacuolar alteration of dermoepidermal junction
 - ▶ Plasma cells admixed with lymphocytic inflammation
 - ▶ Increased reticular dermal mucin
- Clinical:
 - ▶ Female patient with annular/circinate lesion on sun-exposed skin

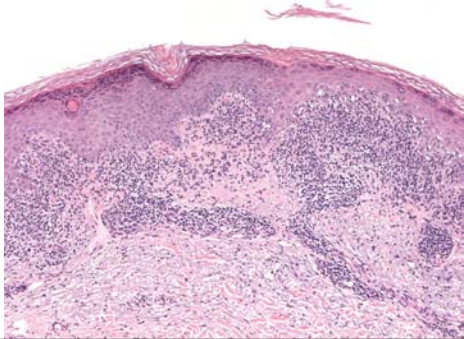
CASE # 1 – SUMMARY OF FINDINGS

- ▶ Withheld information:
 - Submitted clinical diagnosis of "r/o DLE"
- ▶ Final diagnosis:
 - "Changes consistent with discoid lupus erythematosus"

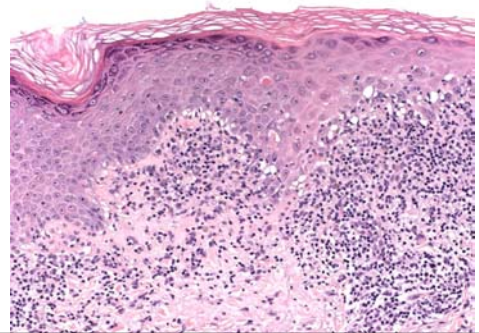
Lichenoid Interface Dermatitis – Archtype: Lichen Planus



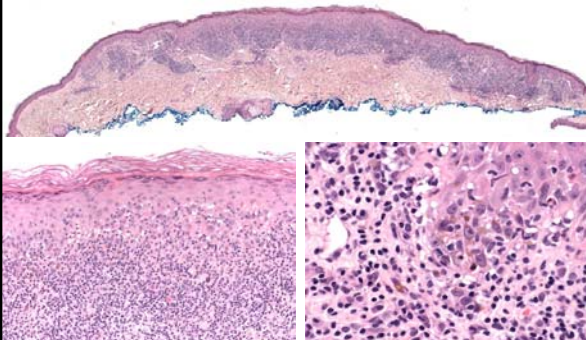
Lichenoid Interface Dermatitis – Lichen Planus



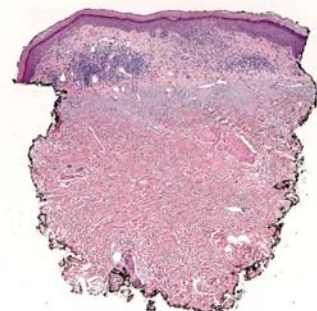
Lichenoid Interface Dermatitis – Lichen Planus



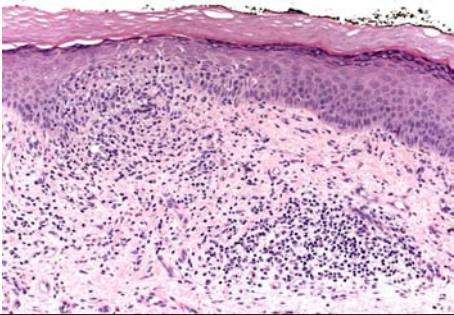
Interface Dermatitis – It's Not Always Dermatitis!



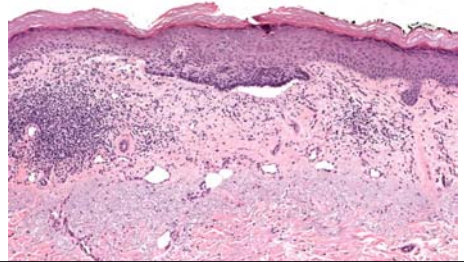
Interface Dermatitis – Not Always Dermatitis!



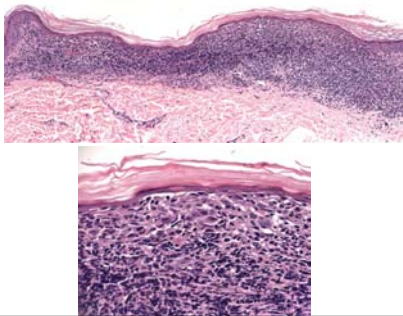
**Interface Dermatitis –
Not Always Dermatitis!**



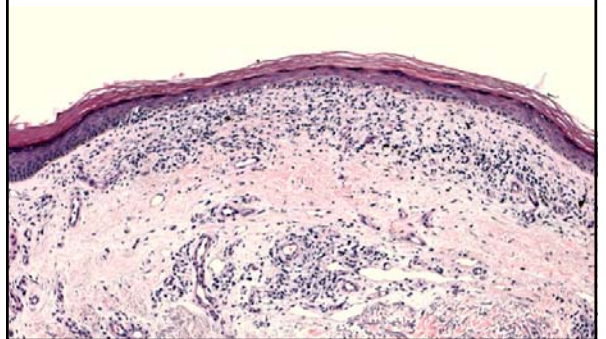
**Interface Dermatitis –
Not Always Dermatitis!**



**Interface Dermatitis –
Not Always Dermatitis!**



**Interface Dermatitis –
Not Always Dermatitis!**



**HISTOLOGIC
DIAGNOSIS OF
INFLAMMATORY
SKIN DISEASES**

An Algorithmic Method
Based On Pattern Analysis
SECOND EDITION



A. BERNARD ACKERMAN
SERGIO CACABO-RODRIGUEZ
ROBERT SANCHEZ
TOMAS GIL
BRUCE DENHIGG
MARTIN WOODRUFF
W. BARRY BARNHILL

