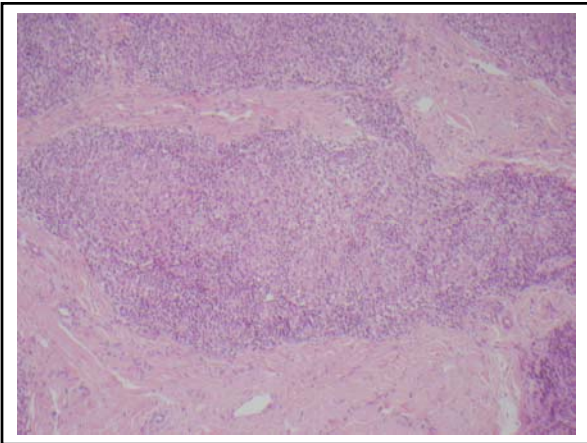


Granulomatous Dermatitis: An Approach to Diagnosis

Joseph D. Hillman M.D.
04/08/2008

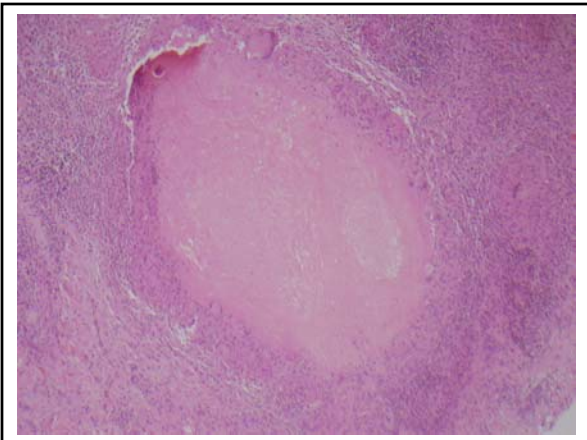
General Types of Granulomatous Inflammation

- Sarcoidal
- Tuberculoid
- Palisaded
- Interstitial
- Suppurative



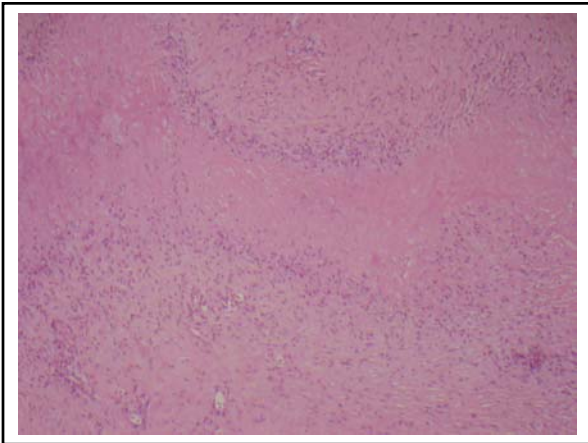
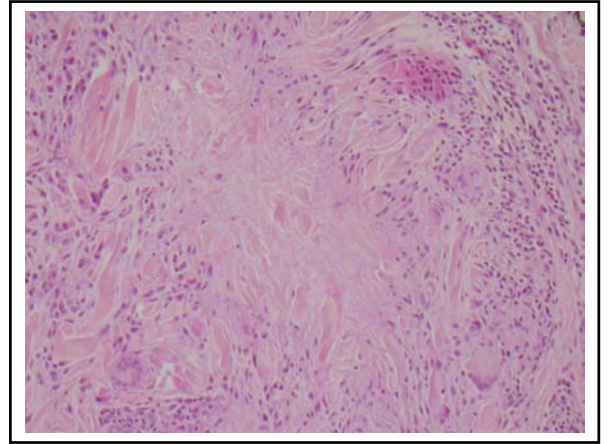
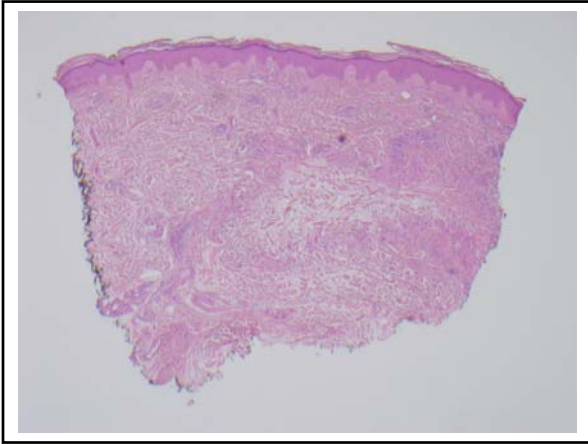
Sarcoidal Granulomatous Inflammation Ddx

- Sarcoidosis
- Rosacea
- Crohn's disease
- Melkersson-Rosenthal syndrome
- Infection
- Foreign bodies



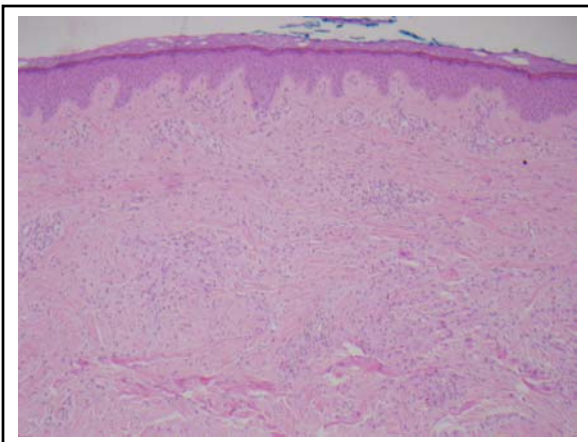
Tuberculoid Granulomatous Inflammation Ddx

- Mycobacterial infections
- Leishmania
- Syphilis
- Brucellosis
- Rosacea
- Crohn's disease
- Foreign bodies



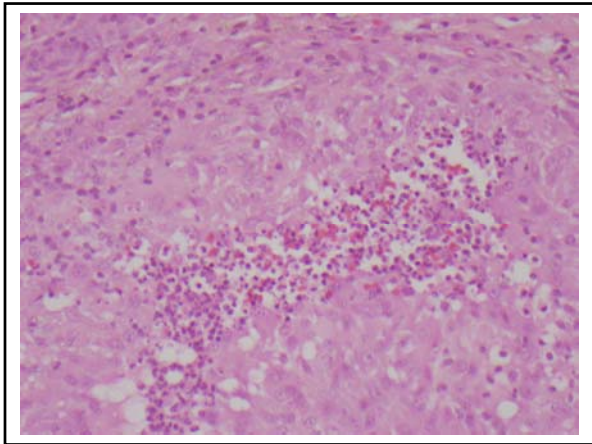
Palisaded Granulomatous Inflammation Ddx

- Granuloma annulare
- Necrobiosis lipoidica
- Necrobiotic xanthogranuloma
- Rheumatoid nodule
- Gout
- Papulonecrotic tuberculoid



Interstitial Granulomatous Inflammation Ddx

- Granuloma annulare
- Systemic disease-associated interstitial granulomatous dermatitis
- Interstitial granulomatous drug eruption

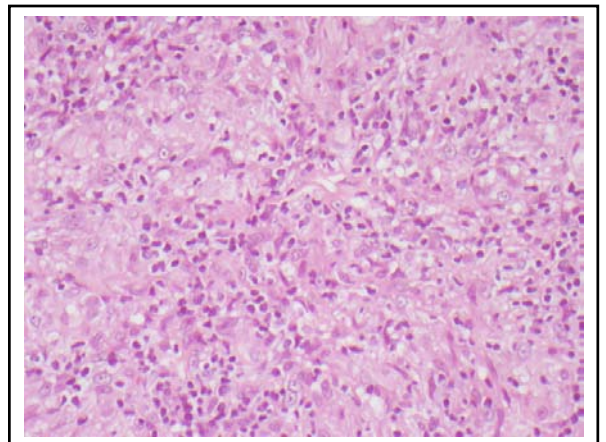
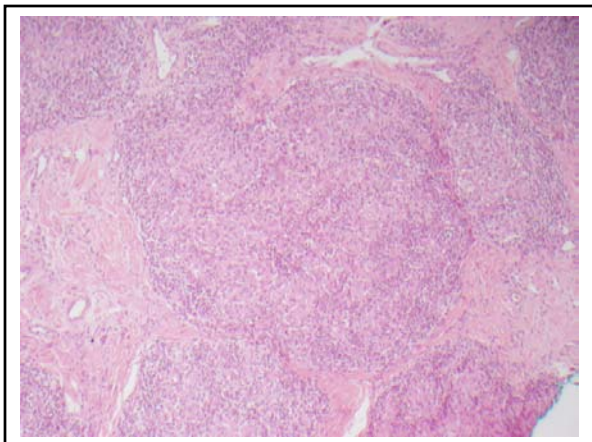
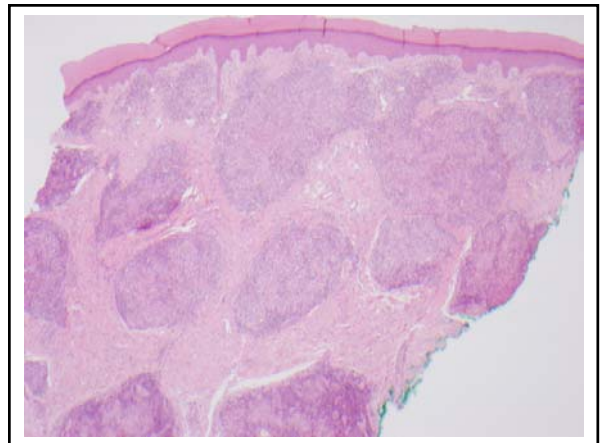


Suppurative Granulomatous Inflammation Ddx

- Foreign bodies
 - Ruptured cyst or follicle
 - External foreign bodies
- Infection
 - Bacterial
 - Mycobacterial
 - Actinomycotic
 - Fungal
 - Algal
 - Protozoal
 - Parasitic

Clinical History

- 48-year-old man with a history of a right cheek lesion and now with a red-brown nodule on the left hand.



- AFB and GMS stains are negative for microorganisms

Diagnosis

- Cutaneous Sarcoidosis, chronic persistent type

Cutaneous Sarcoidosis: Clinical Presentation

- Chronic persistent type: Brown-red or purple papules and plaques
- Lupus pernio: nose, cheeks, and ears are affected
- Rare variants: lichenoid, erythrodermic, ichthyosiform, atrophic, ulcerating, verrucous, angioliupoid, hypopigmented, alopecic, morpheaform, subcutaneous
- Can also be associated with granuloma annulare, scars, tatoos, exogenous ochronosis
- Polarizable material has been seen in up to 20% of patients with systemic sarcoidosis
- Subacute transient sarcoidosis: erythema nodosum-like lesions

Cutaneous Sarcoidosis: Histopathologic Findings

- Noncaseating granulomas
 - Absent to sparse lymphocytic infiltrate
 - Absent to moderate number of giant cells
 - Asteroid bodies
 - Schauman bodies
- Negative special stains for microorganisms
- A diagnosis of exclusion requiring clinicopathologic correlation

Cutaneous Sarcoidosis: Ddx for this case

- Lupus vulgaris
- Foreign body granulomas
- Rosacea (esp. papular type)
- Tuberculoid leprosy

References

- Ackerman, AB, et al. Histologic Diagnosis of Inflammatory Skin Diseases, 3rd ed.
- Elder DE, et al. Lever's Histopathology of the Skin, 9th ed.
- Weedon D. Skin Pathology, 2nd ed.
- McKee PH, et al. Pathology of the Skin, 3rd ed.