

Los Angeles Society of Pathologists, Inc. Newsletter

April 2024

Volume 28 – Issue 4

APRIL ACADEMIC PROGRAM Tuesday, April 9th, 2024 - via Zoom

Register in advance for this meeting:

[Click here to register](#)

After registering, you will receive a confirmation email containing information about joining the meeting

Spring Slide Seminar – USC/LA General Faculty



Julie Huss-Bawab, M.D.

Associate Professor of Clinical Pathology

“Identification of Metabolic Disease by Autopsy: Case Example”



Yuna Gong, M.D.

Associate Clinical Professor of Pathology

“Uncommon Gastric Polyps”



Nafiseh Janaki, M.D.

Associate Professor of Pathology

“Invasive Squamous Cell Carcinoma of the Breast associated with Breast Augmentation Implant Capsule”



W. Dean Wallace, M.D., FCAP

Professor of Pathology

“Usual Presentation of an Unusual Interstitial Lung Disease”

The Los Angeles Society of Pathologists, Inc. is accredited by the Accreditation Council for Continuing Medical Education/California Medical Association (ACCME/CMA) to provide continuing medical education for physicians. The Los Angeles Society of Pathologists, Inc. takes responsibility for the content, quality and scientific integrity of this CME activity.

The Los Angeles Society of Pathologists, Inc. designates this educational activity for a maximum of 1.50 AMA PRA Category 1 Credit(s)™. Physicians should only claim credit commensurate with the extent of their participation in the activity. This credit may also be applied to the CMA Certification in Continuing Medical Education.

Dear Readers,

Please join us in thanking Dr. Eric Vail for his talk on ctDNA Assays in Oncology: Clinical Uses and Considerations during our March meeting. Thank you, Dr. Vail!

The 51st Annual Resident/Fellow Symposium will be held on May 14, 2024. We invite residents and fellows to participate. The submission deadline is April 12th and all details are on page 3 of the newsletter.

We would like to remind you to renew your annual membership if you have not already done so. It can be done online at www.lasop.org. The dues are necessary to support our academic programs, including the January All-Day Program. Moreover, we would like to make a special appeal to our members that they consider making an additional gift to the Society as Patron (\$100), Supporting (\$50), or Sustaining (\$25) voluntary supporters. We are incredibly grateful for these generous gifts, which greatly benefit our society's academic mission. We want to thank Drs. Cove and Osborn for their generous donations.

Following our Annual Resident/Fellow symposium our next program will be the Summer Slide Seminar on Tuesday, June 11, 2024, presented this year by UCLA.

We look forward to seeing you for this month's academic program, the Spring Slide Seminar presented by USC/LA General Medical Center at 6:30 pm on April 9, 2024. The presenters are Drs. Julie Huss-Bawab, Yung Gong, Nafiseh Janaki and W. Dean Wallace.

Use the following link to register in advance for this meeting:

https://us02web.zoom.us/meeting/register/tZModu-sqTojGNAbosal_rbpSxml9CIYD7rbB

After registering, you will receive a confirmation email containing information about joining the meeting. Add the Zoom information to your personal or work calendar so you won't miss the meeting.

*Sincerely,
The Board*

Annual Resident/Fellow Symposium

On May 14th, The Los Angeles Society of Pathologists, Inc. will hold our Annual Resident & Fellow Symposium. **This year a total of four submissions will be chosen for a 15 minute virtual presentation: 3 difficult/interesting case reports and 1 research related presentation.**

The deadline for submission is April 12th, 2024. If selected, you will be contacted by May 3rd

To submit a case, please follow the format and instructions outlined below:

Create a PowerPoint presentation (PPT) and convert to PDF before submitting them to LASOPMD@gmail.com

Your presentation should be no longer than 15 minutes which includes 3 minutes of Q & A

Please type 'Resident & Fellow Symposium' (Case Report or Research) in the subject line of your email and be sure to include all of your contact information (including your institution) and the title for your presentation in the body of your email.

The PPT PDF presentation for case reports should include:

- Your name, year of training, and program affiliation
- Pertinent patient history, labs and imaging
- Photomicrographs and microscopic description of the case
- Final diagnosis followed by discussion of the entity and differential diagnosis
- List of references.

The PPT pdf presentation for research should include:

- Your name, year of training, and program affiliation
- Brief scope of research project, what question is the project trying to address?
- Description of methods
- Results, with included photos, graphs, or other data
- Discussion of results, limitations and final conclusions
- List of references

Additional guidelines:

It is the responsibility of the author(s) to ensure that the identity of a patient or numbers associated with a patient are not apparent from the information contained in the presentation.

- Do not use abbreviations in the title or abstract, and limit their use in the text.
- When using acronyms, make certain the full name is spelled out on first use.
- Use International System of Units (SI units)
- Give sources (name of company and location) for all special reagents (e.g., antibodies, enzymes, probes).
- Use generic names of drugs, unless the specific trade name of a drug used is directly relevant to the discussion.
- Follow AMA style for references.
- Reference any web page used for images or data.

Voting Criteria:

Please take a moment and review the criteria that the board will be looking for when voting on your presentations

- Originality
- Is the presentation well-organized, informative and succinct?
- Are the pictures/diagrams presented pertinent and informative?
- Is this information helpful/applicable for a pathologist in general practice?
- If specialty testing is suggested or required, is it readily available and affordable?
- Are differential diagnoses discussed (i.e., top differential diag and the key distinguishing features discussed?)
- Are diagnostic implications discussed? (i.e., how does diagnosis affect patient management?)
- Is the presentation of appropriate length (i.e., able to be presented in 15 minutes)

Upcoming Scientific Programs

Tuesday, April 9th
Spring Slide Seminar
Faculty from
USC/LA General Medical Center

Tuesday, May 14th
51st Annual Resident/Fellow Symposium
Deadline for submission is
April 12th – see page 3 for additional information

Tuesday, June 11th
Summer Slide Seminar
Faculty from UCLA

July & August
Hiatus

Tuesday, September 10th
Dr. Fausto Rodriguez
Neuropathologist
UCLA

Tuesday, October 8th
Fall Slide Seminar
Faculty from Cedars-Sinai

Tuesday, November 12th
TBA



ANATOMIC PATHOLOGY INSTRUCTOR 2024 - 2025 (2 Positions)

Applications are invited for Anatomic Pathology Instructor positions in the Department of Pathology and Laboratory Medicine at Cedars-Sinai Medical Center. The successful candidates will join a subspecialized anatomic pathology division supporting the clinical and academic missions of an internationally recognized department. One year of prior fellowship training in surgical pathology or a surgical pathology subspecialty is preferred (senior residents with outstanding record of excellent diagnostic skills will also be considered). **Eligibility for California licensure and for appointment to the Cedars-Sinai Medical Staff is required.**

Positions are **one year in duration (consideration may be given to a second year)**, with independent sign-out as a full time faculty after initial brief period of supervision and proctoring, coupled with active role in resident education on a daily basis, responsibilities in an active intraoperative consultation service (Frozen Sections) and tumor board coverage, with availability of protected time on a weekly basis for preparation for educational responsibilities/ other duties as applicable. Instructors will rotate through core subspecialties, with room for emphasis on subspecialties of interest during the second half of the year. In addition, up to 4 weeks of elective service time are granted, which may be used for an additional subspecialty rotation in anatomic pathology of personal interest.

The instructor will have the unique opportunity to work with subspecialized pathologists with substantial expertise in their fields, providing both exceptional educational as well as practical experience, emerging with the confidence of independent and competent practicing surgical pathologists in either a community or academic setting, or enter and excel into further subspecialty fellowship training, within or outside our department.

Instructors are employed by Beverly Pathology, an independently contracted pathology group under the Cedars-Sinai Medical Foundation. The Division of Anatomic Pathology processes over 70,000 surgical and 25,000 cytologic cases annually (both neoplastic and non-neoplastic). Please visit our website for more information: [Cedars Sinai Path & Lab Medicine](https://cedars-sinai.org/pathology)

Interested applicants should submit a **curriculum vitae, letter of interest, and 3 References with contact information to:** <https://beverlypathology.bamboohr.com/careers/18>

Contacts: Email: carrie.domagas@cshs.org Tel: (310) 423-1610

Program Director: **Reza Setoodeh, MD**



Gynecologic Pathology Fellowship – 2024-2025 Academic Year

Program Description

The University of California, Los Angeles (UCLA) Department of Pathology and Laboratory Medicine is currently accepting applications for a one-year, non-ACGME accredited fellowship in Gynecologic Pathology, for the 2024-2025 academic year.

The fellowship is intended to foster the development of strong diagnostic skills and up-to-date training in clinically relevant pathologic aspects for practice in both the academic and community setting. The fellow will spend the majority of their time on the gynecological pathology service. Placental and perinatal pathology, with opportunities for fetal examinations and newborn surgical pathology, are included. The importance of clinic-pathological interaction is stressed, with the fellow participating in tumor board and multi-disciplinary conferences. The fellow participates in daily sign-out and service work-related activities, including overseeing residents on the gynecologic pathology services.

All fellows also spend one rotation as a frozen section/gross room supervisor at The Ronald Regan UCLA Medical Center and complete a one-month general surgical pathology rotation at Santa Monica UCLA Medical Center.

Fellows will have the opportunity to independently sign-out clinical cases and perform intraoperative/frozen section consultations. There will be a proctoring process in place to determine the fellow's readiness to have these clinical privileges.

When on JA-WH or JA-GYN rotations, the fellow will assist and supervise residents with fetopsies and evaluation of D&E specimens from second trimester terminations for congenital anomalies. While accommodating other responsibilities, we will try to prioritize fellow involvement in the gross dissection and organ review, microscopic examination, and oversight and report editing of the residents' reports. The fellows will also be notified of newborn surgical specimens on the GI, Heart-Lung, and GU services, so that they may participate at the time of sign-out or with subsequent review of these cases.

Applications

For more information and to apply, please click on the following link and follow the instructions: <https://www.uclahealth.org/departments/pathology/education/fellowship-programs/non-acgme-fellowship-programs/non-acgme-fellowship-application-requirements>

Program Directors:

Surgical Pathology Fellowship Directors:
Steven Hart, MD
David Y. Lu, MD

Gynecologic Pathology Service Chief:
Neda Moatamed, MD

Inquiries should be addressed to the program coordinator:

Andrew Aldapa
Telephone: 310-206-1770
Email: aldapa@mednet.ucla.edu

Classified Ads

The UCLA logo consists of the letters "UCLA" in a white, bold, sans-serif font, centered within a solid blue rectangular background.

Genitourinary Pathology Fellowship – 2025-2026 Academic Year

Program Description

The University of California, Los Angeles (UCLA) Department of Pathology and Laboratory Medicine is currently accepting applications for a one-year, non-ACGME accredited fellowship in Genitourinary (GU) Pathology, for the 2025-2026 academic year.

The fellowship will foster the development of strong diagnostic skills with up-to-date training that will prepare the fellow for practice in either the academic or community setting with specialized expertise in GU Pathology. The fellow will participate in all aspects of the GU Pathology service, including handling and work-up of daily cases, presenting at conferences and tumor boards, as well as supervision of on service residents. The fellow may also participate in teaching activities, including: 1) serving as Junior Attending; 2) presenting GU pathology lectures to pathology and urology trainees; and 3) GU lab sessions for medical students.

Ample opportunities for research projects are available with options to present at local and national conferences.

All fellows spend one rotation as a frozen section/gross room supervisor at The Ronald Reagan UCLA Medical Center and complete a one-month general surgical pathology rotation at Santa Monica-UCLA Medical Center.

Fellows will have the opportunity to independently sign-out clinical cases and perform intraoperative/frozen section consultations. There will be a proctoring process in place to determine the fellow's readiness to have these clinical privileges.

Applications

For more information and to apply, please click on the following link and follow the instructions:

<https://www.uclahealth.org/departments/pathology/education/fellowship-programs/non-acgme-fellowship-programs/non-acgme-fellowship-application-requirements>

Program Directors:

Surgical Pathology Fellowship Directors:
Steven Hart, MD
David Y. Lu, MD

Genitourinary Pathology Service Chief:
Anthony Sisk, DO

Inquiries should be addressed to the program coordinator:

Andrew Aldapa
Telephone: 310-206-1770
Email: aaldapa@mednet.ucla.edu



Cardiovascular & Pulmonary Pathology Fellowship 2025-2026 Academic Year

Program Description

The University of California, Los Angeles (UCLA) Department of Pathology and Laboratory Medicine is currently accepting applications for a one-year, non-ACGME accredited fellowship in Cardiovascular & Pulmonary Pathology, for the 2025-2026 academic year.

UCLA is a leading center of clinical practice and research in cardiac and pulmonary transplantation, congenital heart disease, and atherosclerotic cardiovascular disease, and is a center of excellence in lung cancer and interstitial lung diseases. The fellow will participate in the diagnostic pathology related to these programs, and other scholarly activities including teaching and research. The fellow will have the option of participating in both (cardiovascular/pulmonary) subspecialty services during the training period.

Fellows also spend one month as a frozen section/gross room supervisor at The Ronald Reagan UCLA Medical Center and complete a general surgical pathology rotation at Santa Monica UCLA Medical Center.

Fellows will have the opportunity to independently sign-out clinical cases and perform intraoperative/frozen section consultations. There will be a proctoring process in place to determine the fellow's readiness to have these clinical privileges.

Applications

For more information and to apply, please click on the following link and follow the instructions:

<https://www.uclahealth.org/departments/pathology/education/fellowship-programs/non-acgme-fellowship-programs/non-acgme-fellowship-application-requirements>

Program Directors:

Surgical Pathology Fellowship Directors:

Steven Hart, MD

David Y. Lu, MD

Cardiovascular & Pulmonary Pathology Service Chief:

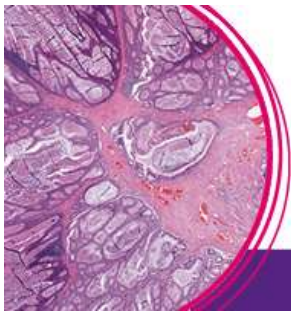
Gregory Fishbein, MD

Inquiries should be addressed to the program coordinator:

Andrew Aldapa

Telephone: 310-206-1770

Email: aldapa@mednet.ucla.edu



10TH DIGITAL PATHOLOGY & AI CONGRESS: USA

MAY 7-8, 2024 - SAN DIEGO, USA

Los Angeles Society of Pathologists Member Discount Code LASOP30 and Save 30%

This is the leading event that integrates presentations on AI and Digital Pathology so that you can understand how best to exploit the technology and build the business case for its adoption.

60+ PRESENTATIONS INCLUDING:

ULYSSES G. J. BALIS, University of Michigan

Preparing for and deploying all-digital workflow at significant scale: the University of Michigan Experience

JASON HIPPI, Mayo Clinic

Transforming Pathology through Digital Innovation: The Mayo Clinic Experience

SAVITRI KRISHNAMURTHY, MD Anderson Cancer Centre

AI-based solution for evaluation of HER2 protein expression in breast cancer

HOOMAN RASHIDI, Computational Pathology & Ai Center of Excellence (CPACE), UPMC

Reshaping the Future of Medical Care, Education and Research: The Pivotal Roles of Synthetic Data, Generative AI, and Auto-MLs

U.S. FOOD AND DRUG ADMINISTRATION

ERICK LIN, Center for Devices and Radiological Health, FDA

Enter the poster competition to win a speaking slot!

30 + Exhibitors

FIND OUT MORE:

www.global-engage.com/product/digital-pathology-usa-2024

Member Discount Code LASOP30

Apr/May/June

Membership Information

The following memberships were approved during the last board meeting:

No new memberships received/approved

Membership applications are received on a continual basis and are reviewed at the next monthly Board Meeting.

For more information, please contact the Society's Administrator, Shirley Ann Jacke, at lasopmd@gmail.com

Membership applications are available at:
<http://www.lasop.org/pgs/application.htm>



Stay connected with us!

Coroner's Corner

Chief Medical Examiner-Coroner: Dr. Odey Ukpo

Acting Medical Director: Dr. Robyn Parks

LOS ANGELES DEPARTMENT OF MEDICAL EXAMINER
1104 N. Mission Road,
Los Angeles, CA 90033

Contact/visit us at: 323.343.0522

http://coroner.co.la.ca.us/htm/Coroner_Home.htm

Local Grand Rounds Schedule

- **Cedars-Sinai Medical Center**
<https://www.cedars-sinai.edu/education/continuing-medical.html>
- **City of Hope**
<https://cme.cityofhope.org/>
- **Harbor-UCLA**
<https://www.harbor-ucla.org/internal-medicine/monthly-conference-schedule/>
- **Loma Linda University**
<https://medicine.llu.edu/faculty/continuing-medical-education/continuing-medical-education-upcoming-courses>
- **UC Irvine**
<http://www.healthaffairs.uci.edu/som/pathology/residencyProgram.html>
- **UCLA**
<https://www.cme.ucla.edu/pages/index>
- **USC**
<https://keck.usc.edu/pathology/events/>

LASOP Officers and Administrative Staff

Anna J Mathew, MD

President

Keck School of Medicine of
USC
Pathology Dept
1450 San Pablo Street
Los Angeles, CA
(323) 442-9616

Vice President

Aviv Hever, MD

Secretary/Treasurer

Kaiser Permanente
Pathology Dept
Los Angeles Med Cntr
4867 Sunset Blvd
Los Angeles, CA 90027
(323)783-5820

Shirley Jacke

Administrative Officer

(424)333-0290

Christopher Hale, M.D.
Danielle Hutchings, M.D.
David Y. Lu, M.D.
Rifat Mannan, M.D.
Nick Shillingford, M.D.
Eric Vail, M.D.
Evan Yung, M.D.

Visit us on the web at: <http://www.lasop.org>